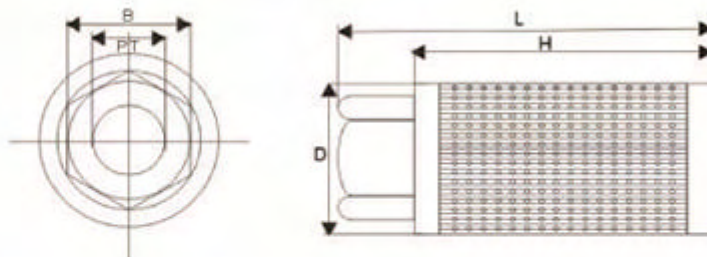


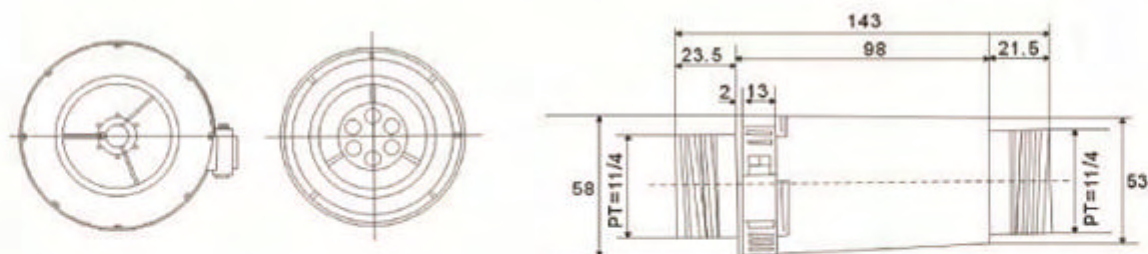
Accessory

Air Filter



型号	PT	D (mm)	L (mm)	H (mm)	B (mm)	Filtration precision	Flow (l/min)	Weight (Kg)
MF-08	1	58	170	155	42	100	110	0.20
MF-10	1 1/4	71	186	170	54	100	210	0.35
MF-12	1 1/2	85	196	182	65	100	285	0.49
MF-16	2	103	215	202	75	100	395	0.65
MF-20	2 1/2	148	274	252	97	100	750	1.20
MF-32	4	208	380	357	142	100	1000	2.45

Pressure Relief Valve



Model	PT	L	Specification
RV-01	1 1/4"	143	0-3000mmAq
RV-02	1 1/4"	143	0-6000mmAq